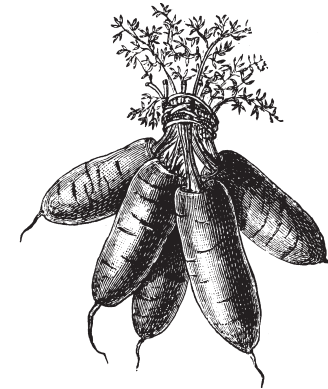


# WISHING STONE FARM



*Community  
Supported  
Agriculture*

**2011 Brochure**



*Proprietors: Skip Paul & Liz Peckham*

25 Shaw Road, Little Compton, RI 02837

(401) 635-4274

[skippaul@wishingstonefarm.com](mailto:skippaul@wishingstonefarm.com)



25 Shaw Road, Little Compton, RI 02837-1518  
**WISHING STONE FARM**



# WISHING STONE FARM

Wishing Stone Farm is nestled just in from the coastline in Little Compton, RI. This will be our 28th season farming. We are one of Rhode Island's largest state certified organic farms, managing approximately 35 acres of fields and 30,000 sq. ft. of greenhouse space. The majority of our produce is grown organically, however certain crops such as peaches are farmed with biorational/IPM methods, and are always labeled as such.

We are a family farm, growing a large variety of quality produce for sale at farmer's markets and wholesale accounts throughout the state. For us, it is more a spiritual journey than just a job, calling upon all our resources and sensibilities.



## What is CSA?

Community Supported Agriculture (CSA) is a program that has many benefits to you the consumer, and for us, the farmers.

By securing funds early in the year we are able to avoid costly production loans, and plan better for the upcoming season.

As a CSA member, your commitment entitles you to a discount for fresh organic and biorational produce. You will be securing a food source close to home and providing for the long-term care and security of agricultural land and open space in Rhode Island.

Together we will share in the risks and rewards in farming by accepting the fluctuations in the harvest caused by nature.



## Wishing Stone Farm Debit CSA / Farmers Markets *Commitment For 2011 Season*

Name \_\_\_\_\_

Winter mailing Address \_\_\_\_\_

Town/State \_\_\_\_\_ Zip+4 \_\_\_\_\_

Phone(day) \_\_\_\_\_

Email address for general info: kept confidential, **please print clearly**

### **Please indicate your most likely pickup location:**

*(although you may visit any of the 5 markets!)*

- Little Compton, Tuesday
- Little Compton, Saturday
- Barrington, Tuesday
- Providence, Friends Meeting House, Thursday
- Providence, Hope St. Market, Saturday

I would like to donate \$ \_\_\_\_\_ toward Wishing Stone Farms produce being delivered to area soup kitchens and the RI Food Bank. *In 2010 we donated 2 tons of food!*

Amount enclosed \$ \_\_\_\_\_

Please make checks payable to **Wishing Stone Farm**  
and mail to: 25 Shaw Road, Little Compton, RI 02837

I understand that Wishing Stone Farm is accepting my check and thereby my commitment and membership in the 2011 CSA season. I recognize that there is no guarantee on the exact amount of produce I will receive for my share price. In joining the farm, I am committed to learn the risks and rewards of farming by accepting the fluctuations in the harvest caused by nature.

Signature \_\_\_\_\_ Date \_\_\_\_\_

All funds must be utilized by the seasons end. No credits will be forwarded to the next season.



## Wishing Stone Farm Commitment For the 2011 Season

**\$200.00**, lowest commitment, we would recommend this size share if you plan to be away for much of the season, or if you are just trying it out for the first time. Maybe you tend a garden and would like to supplement with things you do not grow.

**\$350.00**, we recommend this for single folks or couples who do not want many extras, mostly good fresh produce.

**\$400.00 - \$500.00**, recommended for couples or a family with a couple of children who eat veggies regularly and enjoy the extras.

**\$550.00 - \$750.00+** for those who love good produce, love to cook, have a good size family, enjoy company and entertaining as well.

Due to the new lower commitment level, we will no longer allow folks to share a share, it will be less confusion all around!

For those in need of split payments, no discount will be applied past the April 30th deadline. Please call Liz or Skip to confirm this option.

Pay by **February 28th** and receive **12%** discount

Pay by **March 30th** and receive **10%** discount

Pay by **April 30th** and receive **8%** discount



## What to Expect

Our production year starts in June and ends in October. Each month is characterized by distinct seasonal variations. We start off slowly with mostly greenhouse vegetables in June. By mid-July our field grown production will increase substantially and peak during the months of August through October.

June 30th: greenhouse tomatoes, yellow (low acid) tomatoes, cherry tomatoes, spinach, broccoli, radishes, mesclun (salad greens), choice of (chives, oregano, basil or dill), arugula, baby white turnips, sugarsnap peas, red leaf lettuce, cabbage, rhubarb...etc...

For more harvest sample offerings, please check out our CSA link at our web site [www.wishingstonefarm.com](http://www.wishingstonefarm.com).



## Wishing Stone Farm Products & other Information

### Extra items:

At each pickup site there will be an opportunity to purchase items made in our commercial kitchen such as salsa, pickles, pesto, dips and fresh breads. Our free range chicken eggs and farm honey will also be available as well as off-farm quality fruits and veggies and cheese for your convenience. The off-farm items are all purely optional and will be marked clearly to avoid confusion.

### Website

Please refer to our web site for added information about our farm. Our home page has a Twitter update for market news or cancellations due to inclement weather. Our home phone will also have a recorded message for those without computer access. In 2011 we hope to add updates to our blog as well. A decision will be made in the fall as to whether we will offer a winter CSA.



## Debit/CSA/Farmers Market

This Year will mark a change at the home farm, as well as some location and day changes in the Providence and Barrington markets. Our "Debit Style Share" that we started in the cities has been so popular that we will now offer that program to our members in the Tiverton/Little Compton area as well.

### Debit Style CSA is Simple!

You send us a check for the amount you would like to spend over the 20 week season by April 30th. The earlier you send it, and the higher the sum, the greater the discount will be. After April 30th there will **not** be a discount added to your account, but you may still join us.

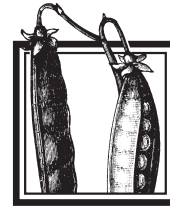
We keep a book at our check-out station with a page just for you. Any discount you earn will be added to your account balance at the beginning of the season. This avoids mistakes at the check out when we are in a rush to record your purchase. Anytime you shop we will total all of your purchases and deduct it from your balance.

You do not have to come every week. Nor do you have to spend an exact amount. You choose from our large variety of the days harvest and treats from our commercial kitchen. You may also select cheeses, meats, Bomster Scallops, and any off farm produce that we buy in, such as mushrooms, apples, etc... Some weeks you may only want a head of lettuce and a couple tomatoes, the next time you may be planning a large party with a large shopping list. The only requirement is that **all** funds must be used by the end of the season, as nothing will be carried into the next year.

Those who will be shopping at our home farm will be asked to read and follow some safety rules when visiting the farm and our children's garden.

**PLEASE VISIT OUR WEBSITE FOR MORE DETAILS AND PHOTOS ABOUT OUR FARM,**

**[www.wishingstonefarm.com](http://www.wishingstonefarm.com)**



## Schedules, Times & Locations

**\*We recommend you keep this page handy for reference\***

**Little Compton Home Farm:** *\*note new times and days!*

Tuesday afternoons - 3:00 - 6:00 (June 14th - Oct. 25th)

Saturdays - 10:00 - 4:00 (June 18th - Oct. 29th)

**Barrington:** at ACE Hardware, County Rd. *\*note new day!*

Tuesday afternoons - 3:00 - 6:00 (June 14th - Oct. 25th)

**Providence:** at Friends Meeting House, corner of Olney St. & Morris Ave.

*\*note new day and location!*

Thursday afternoons - 3:00 - 6:00 (June 16th - Oct. 27th)

**Providence:** at the Hope St. Market in Lippitt Park

Saturday mornings - 9:30 - 12:30 (June 18th - Oct. 29th)

You may shop at any of these markets with your "debit share".

Please visit our website for added information about our farm. Our home page has a Twitter update for market news or cancellations of out door markets due to inclement weather. Our home phone will also have a recorded message for those without computer access. In 2011 we hope to add updates to our blog as well.

**[www.wishingstonefarm.com](http://www.wishingstonefarm.com)**

**401-635-4274**

